

Goldney House

Venue information



Venues & Events

0117 428 4000

uob-venues@bristol.ac.uk

www.bristol.ac.uk/venues



It's all part of the package...

Our knowledge, experience and venue management skills will ensure your event objectives are achieved.

Your Event Coordinator will manage the following:

- Prompt response to your enquiry with venue recommendations. A comprehensive quote with an offer of a site visit. Our in-depth knowledge of event management means you can rely on us to make your event a success.
- Liaison and completion of paperwork for all hired-in services with our suppliers, event scheduling advice and recommendations, marketing and promotional guidance.
- On the day, our friendly and enthusiastic event management and support team will ensure that every element of your event runs smoothly.
- When it comes to invoices, you will only liaise with your Event Coordinator; we will manage the rest on your behalf.

Goldney House

Built in the 18th century and steeped in history, Goldney House offers beautiful meeting rooms, formal and wild gardens, water features, follies and the famous Grotto. Goldney occupies nearly 10 acres of grounds on the edge of Clifton Village and is one of the University's most prestigious venues.

Beautiful, historic meeting rooms

With five stunning rooms, including the sought-after Orangery, plus the accommodation and gardens; Goldney House offers guests flexibility, space, and elegance.

This venue is perfect for those who wish to escape the hustle and bustle of the city without travelling out of town. With a wide range of catering options, extensive outside space and the ability to create nearly every type of event, Goldney House is a truly exceptional and memorable venue.



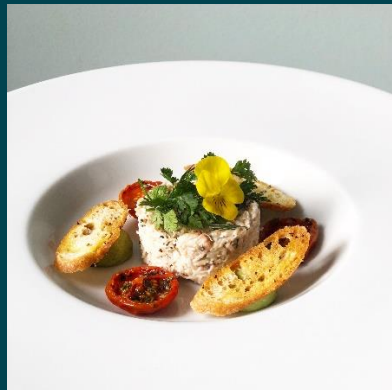
The Entrance Hall



Inside the Orangery

Catering

Our talented culinary experts can offer their experience and knowledge through creating innovative and fabulous food. Using the freshest ingredients that are sustainably and ethically sourced from local and regional suppliers; we can offer you a range of menus or create a bespoke package. Our professional and friendly team ensure your guests receive a warm welcome and a great service.

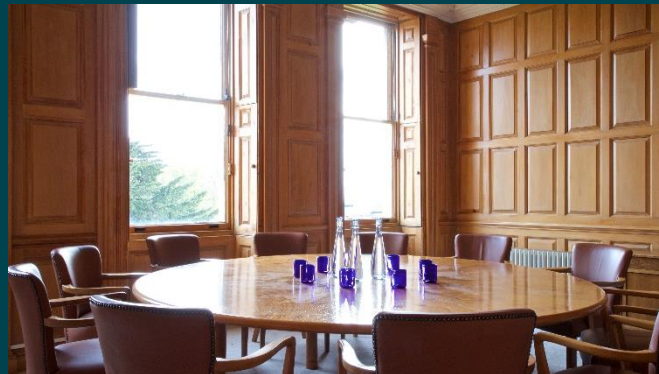


Room details and dimensions

	Available during term	Room Dimensions	Theatre	Boardroom	Formal Dinner	Informal/Mingling	Bar
Orangery	Yes	5.8 x 23.5m	100	38	110	150	Yes (fees apply)
Mahogany Parlour	Yes	-	38	12	-	-	-
Panelled Room	Yes	-	-	10	-	-	-
Garden Room	Yes	-	40	12	30	40	-
Library	Yes	-	-	8	20	35	-
Entrance Hall	Yes	-	-	-	-	80	-
Gardens (Marquee)	No	Maximum size marquee will accommodate 380 guests formally seated. Garden total maximum capacity - 500 informal/mingling.					



The Garden Room



The Panelled Room



The Orangery



The Mahogany Parlour

Accommodation

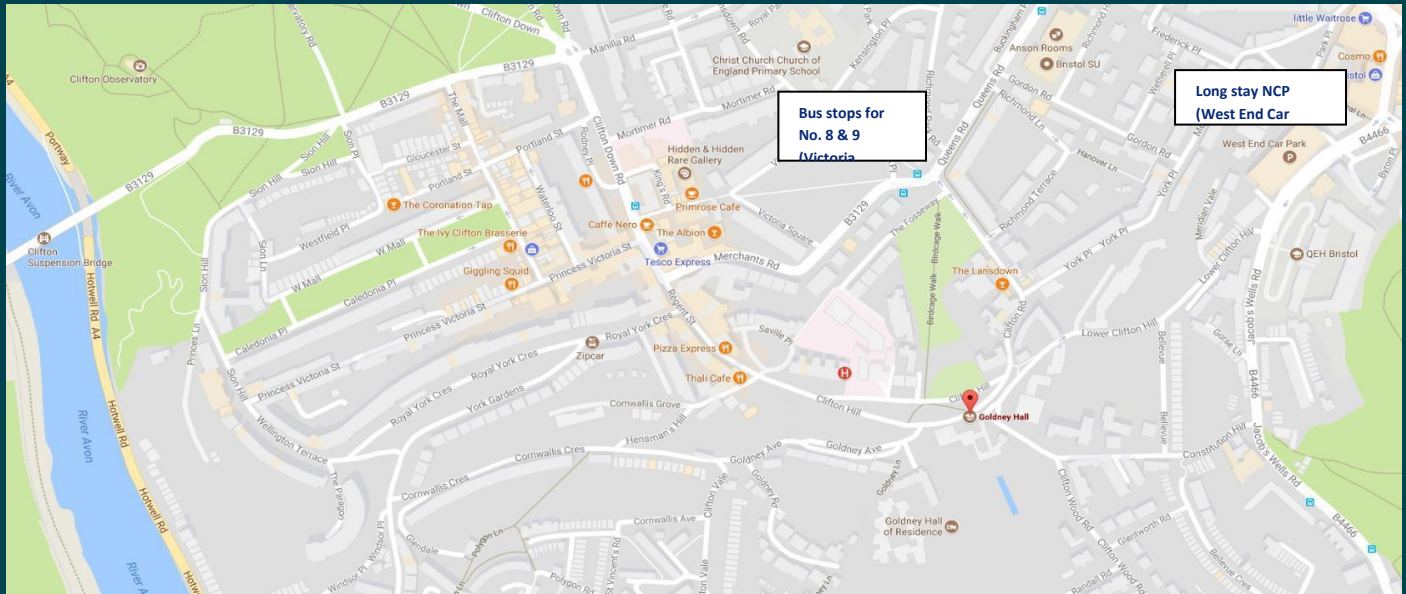
Available during the Summer Vacation and ideally located in the heart of Clifton Village, just a short walk from the main University Campus.

Our bedrooms offer single bed accommodation supplied with toiletries, towels and tea/coffee making facilities. Up to 200 bedrooms, with shared bathroom facilities and access to shared study space.



Maps, directions and parking

Goldney House, Lower Clifton Hill, Clifton, Bristol, BS8 1BH



Car Parking:

There is no parking at Goldney House. Street parking is mainly for local resident's only (9am – 9pm) and is on a permit basis. There are a few pay and display bays which allow parking up to 3 hours. There is a long stay NCP car park nearby on Jacobs Wells Road, BS8 1EH. For more information and charges please visit:

www.bristol.gov.uk/parking/west-end-long-stay-car-park

Park & Ride

Park and Ride services allow you to park without difficulty on the outskirts of the city. A bus transports you to the city centre. For further information please visit:

www.travelwest.info/parkandride

Local Buses

The following bus services run to within walking distance of Goldney House:

8/9 - These bus services run from Bristol Temple Meads train station and the City Centre. Alight at Victoria Square in Clifton Village, which is a 5-minute walk away.

Bus timetable:

www.firstgroup.com/bristol-bath-and-west

By Train

Temple Meads is the closest train station. The number 8 and 9 bus services stop in Clifton Village which just a 5-minute walk.

Taxi:

V Cars: +44 (0)117 925 2626

www.v-cars.com/locations/bristol

By Air:

Bristol International Airport is only 13 km to the south of the city. The Bristol flyer provides a bus service from the airport into the city centre.

For more information please visit:

<https://flyer.bristolairport.co.uk/>

Taxi:

V Cars: +44 (0)117 925 2626

www.v-cars.com/locations/bristol

Other Transport:

Travelling by car, train or plane? Please visit the following website for further information:

www.bristol.ac.uk/maps/